

Lou Malnati's, Surprise, AZ

Location: Surprise, AZ

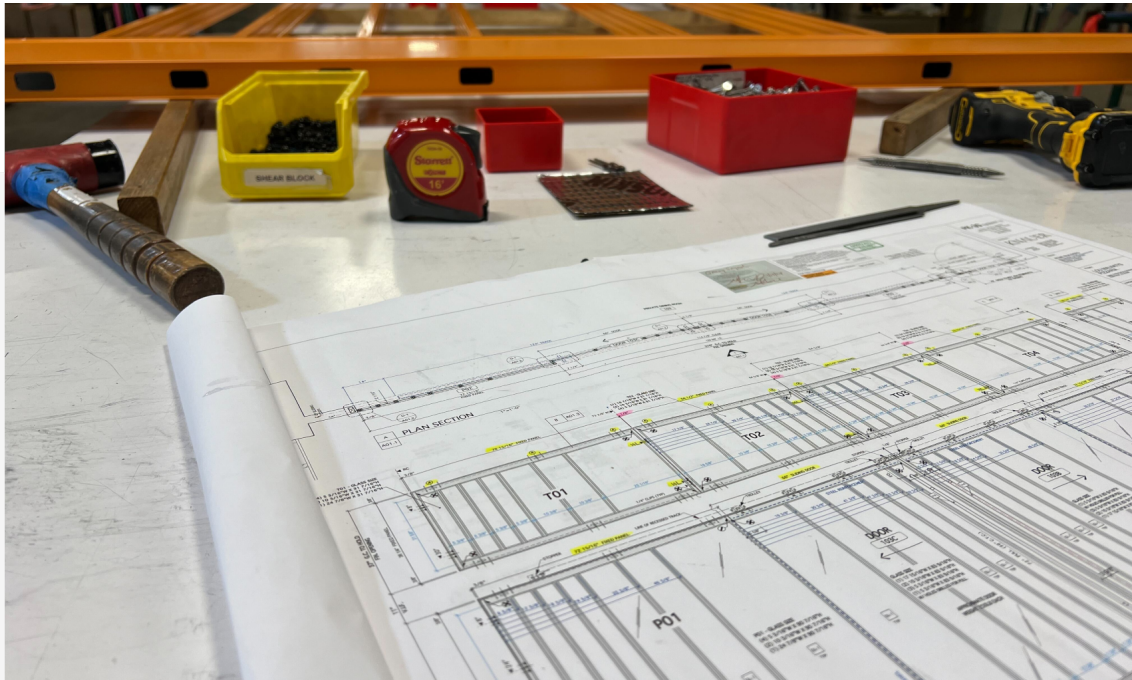
Architect: Knauer Inc.

Scope: 2 Sliding Doors + Swing Door + 7 Fixed Panels











Lou Malnati's, a beloved family-owned restaurant chain renowned for its Chicago-style deep-dish pizza, expanded into Surprise, AZ, with a vision of bringing a warm, inviting dining experience to a new community. The architects at Knauer Inc. designed the 6,000 sq. ft. space with a focus on creating private dining areas that balance style, functionality, and accessibility. [PK30](#) Systems played a pivotal role in achieving this vision by providing sleek, high-performance [sliding](#) and [swing door systems](#), along with [fixed panels](#) prepared to the project's unique requirements.

Challenge

Lou Malnati's expansion into Arizona presented design challenges that required a thoughtful balance of form and function. The private dining rooms needed to offer flexibility while maintaining the brand's signature welcoming atmosphere. Additionally, the design had to meet **ADA compliance standards**, ensuring accessibility for all guests, while incorporating durable materials that could withstand the demands of a high-traffic restaurant environment. Integrating these elements into the overall aesthetic required precision and expertise.

Solutions

[PK30 Systems](#) collaborated closely with Knauer Inc. to deliver a tailored solution that met Lou Malnati's functional and aesthetic needs. By leveraging PK30's custom glass systems, the project achieved the following:

- **Private Dining Room 1:** Bi-parting sliding doors ($\pm 66''$ W x $\pm 96''$ H) with six vertical mullions and recessed suspension tracks for smooth operation. Six fixed panels provided stability while enhancing the space's sleek, modern look. Satin stainless bar pulls and 10" high kick plates added a touch of functionality and style.
- **Private Dining Room 2:** A single swing door ($\pm 36''$ W x $\pm 96''$ H) with vertical mullions and ADA-compliant kick plates, accompanied by a clerestory fixed panel ($\pm 40''$ W x $\pm 40''$ H) to maintain light flow and privacy.

The Class I black anodized aluminum finish offered durability and a contemporary aesthetic, perfectly complementing the restaurant's iconic branding.

Results

The completed project exceeded Lou Malnati's expectations by seamlessly blending functionality, accessibility, and style. [The PK30 system](#) allowed for:

- **Flexible Space Configurations:** The sliding and swing doors provided easy adaptability for private dining needs.
- **Maximized Light Flow:** Fixed clerestory panels ensured natural light enhanced the dining areas.
- **ADA Compliance:** PK30's ADA-compliant systems ensured inclusivity for all guests.
- **Durable Performance:** High-traffic spaces benefited from materials built to last while retaining a sleek appearance.

The result was a dining space that radiates warmth and sophistication while meeting the functional demands of a modern restaurant.

Conclusion

Lou Malnati's Surprise, AZ, location showcases how [PK30 Systems](#) can enhance architectural design through innovative door and panel solutions. By integrating durability, accessibility, and visual appeal, [PK30](#) helped create an environment where guests feel both comfortable and inspired. This project underscores [PK30's](#) commitment to delivering customized glass door systems that elevate both residential and commercial spaces.

Tag: Lou Malnati's, Surprise, AZ