

Smile Train New World, NY

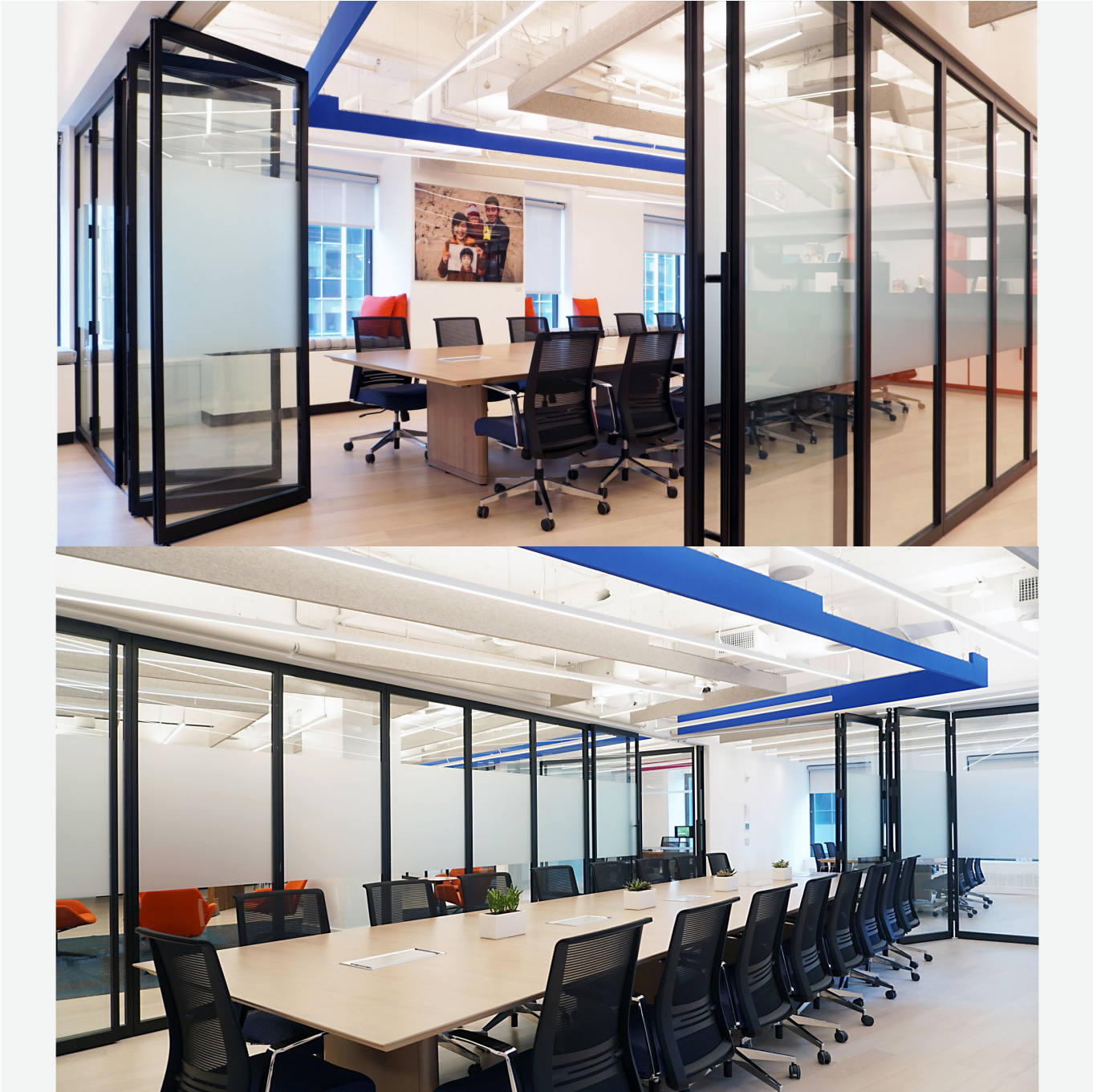
Location: New York City

Architect: Jattuso Architecture PLLC ■ Brooklyn, NY 11201

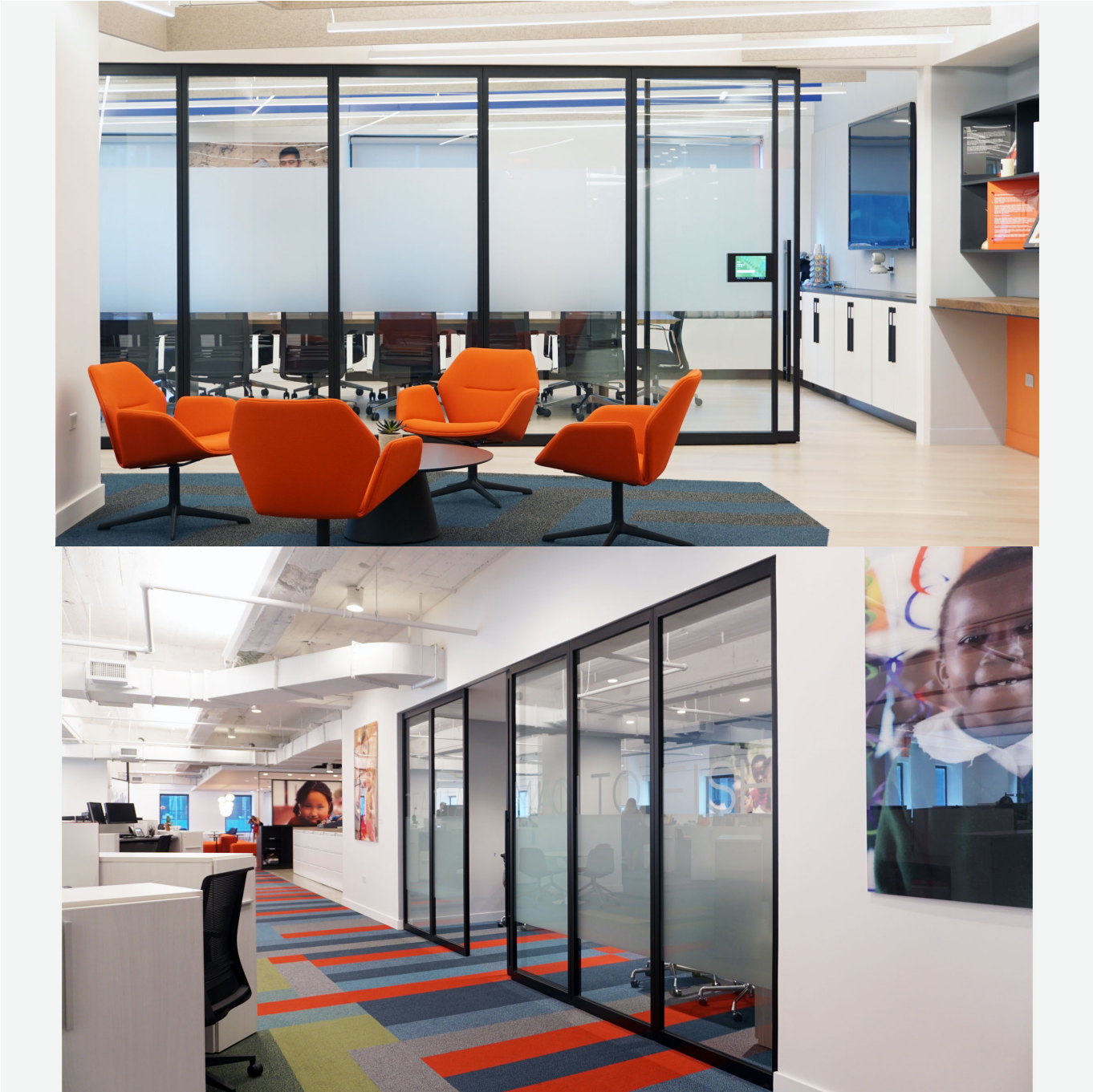
Scope of Work: 120 Linear Feet, (8) Sliding doors + (23) Fixed Panels + (4) Swing Doors + (1) Bi-Folding Wall

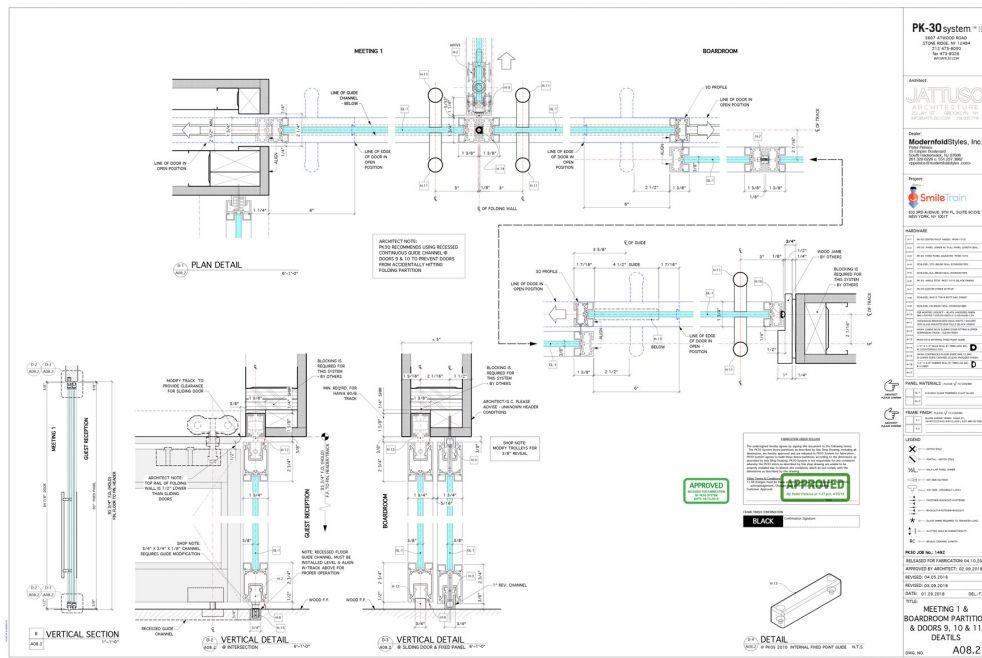
Dealer: Modernfold Styles, South Hackensack, NJ 07606











Founded in 1999 and on Forbes List of the 100 Largest U.S. Charities, Smile Train is an international charity that raises money and partners with medical professionals from around the world to provide free cleft surgery and comprehensive cleft care to children in need. In the summer of 2018, Smile Train moved its Worldwide Headquarters to a newly renovated office at 633 Third Avenue. The modern facility was designed to provide flexible, collaborative spaces where nearly 55 employees could carry the organization’s important vision. The new office needed to have spaces that could be easily configured to accommodate small team meetings yet also hold large company-wide gatherings when necessary.

Jattuso Architecture wanted to give the new office a sense of openness, allowing the flow of natural daylight into its interior as well as the flexibility for space division. A critical part of the design strategy included the need for a flexible glass wall system that would achieve consistent aesthetics throughout the space. These areas included the large conference room, several meeting rooms, huddle rooms, and the CEO office.

“Not only have we received numerous compliments from guests and visitors, but the

folding partition has come in extremely handy already....With little effort, we can expand our meeting capacity and fit our whole office staff in one room for presentations and staff meetings. The look, feel, and function fit our new office perfectly.”

—Justin Twardy, *Smile Train’s Director, Administration and Human Resources*

Jattuso Architecture realized their space design vision with [PK-30 glass system’s](#) flexibility and slim, black satin anodized aluminum profiles resulting in a sophisticated, unified design program throughout the office.

CHALLENGE:

Achieve effective daylighting and design uniformity of multi-functional architectural elements throughout the space. Facilitate space reconfiguration on-the-fly.

SOLUTION:

The PK-30 System [sliding doors](#), [swing doors](#), [fixed panels](#) and [folding wall](#) all utilize the same narrow aluminum profiles achieving continuity of multi-functional architectural elements; a systematic, modern, precise design language from a single source manufacturer.

HIGHLIGHTS:

- The PK-30 bi-folding partition with a continuous recessed bottom guide channel, (providing firm stability), easily converts the large Conference Room into two separate Meeting Rooms.
- A flawless 3-way intersection between the [folding wall](#) and a pair of bi-parting [sliding doors](#), creating a seamless visual flow.

Tag: Smile Train New World, NY